

Minimally invasive device for the removal of cortical bone in oral surgery applications

INSTRUCTIONS FOR USE

- ⚠️ -Make sure the package is not broken before use.
 -Do not use the product if the package is broken.
 -Device to be used by skilled physicians only.
 -When handling the product, wear sterile gloves at all times; be careful not to cut them with the sharp end of the blade.
 -Disposable device, to be used only once. It cannot be cleaned and/or re-sterilised.
 -After use, dispose in special sanitary waste containers as prescribed by the laws in force.
 -META disclaims all liabilities for improper use of the product.
 -Caution: if used with another patient may lose performance and functional features and cause cross-contamination

1 Open completely the package from the side shown and rest the device on the sterile area; use in a perfectly sterile environment at all times.

2 Handle the device so that the mark on the body of the cannula faces the operator. During use, hold your fingers as shown in figures 1A and 1B to ensure accurate and controllable movements at all times.

3 Bone is removed by pressing the front end of the device (blade) on the bone surface, figure 2A, while pulling it back, figure 2B. Bone can be removed from flat and hollow surfaces, with a working angle between 5° and 50° , figure 3. Change the angle and pressure to change the amount and consistency of the removed bone. Micros can contain a volume of up to 0.25 cc.

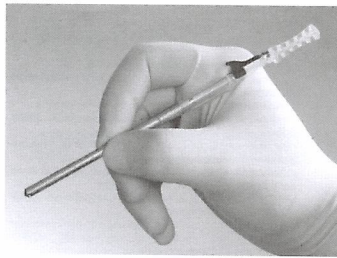
4 To access the collected bone, rest the device on a sterile bowl, then release the lever as shown in figure 4 and slide the handle of the device forward until it is wide open. Use a sterile tool to remove the bone material from the tank, figure 5. To remove more bone, bring the handle back to the initial position and lock the lever as before, figure 6.

TIPS:

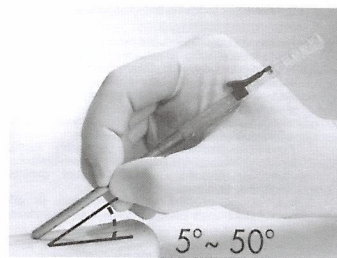
If the cut is not good, change the working angle and pressure on the bone. If the situation does not improve, open the tank, remove the collected material and try to remove the bone again. If no improvement is obtained, stop the surgery and replace the device with a new one in perfect conditions.

WARNING:

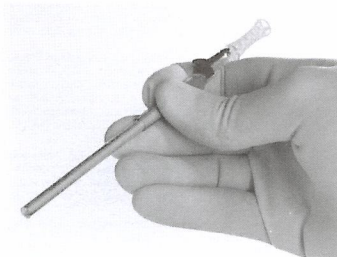
The surgeon shall establish if the patient is fit for bone resection surgery.



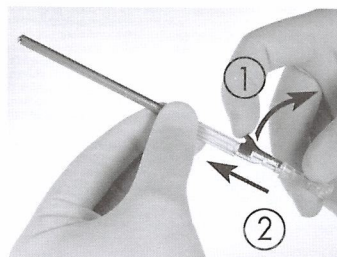
1 A



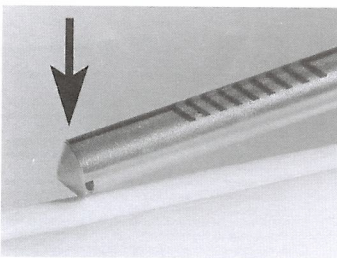
3



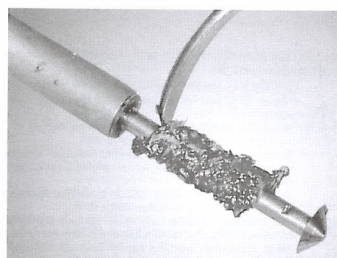
1 B



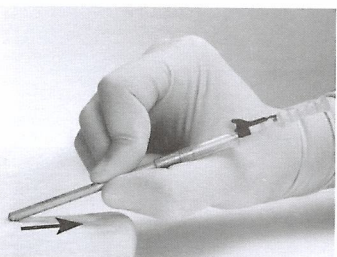
4



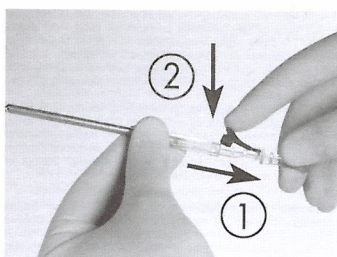
2 A



5



2 B



6