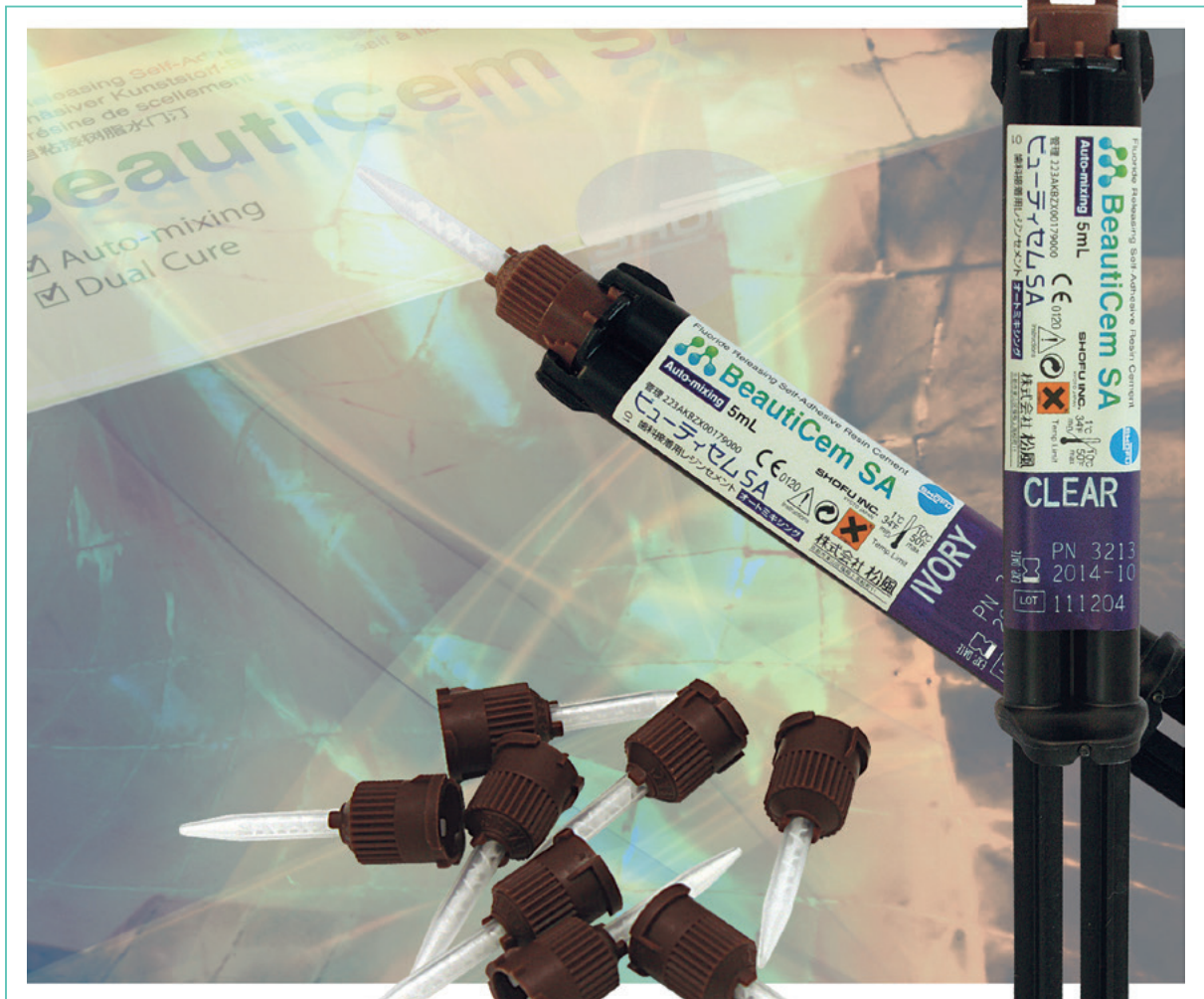


BeautiCem SA

Self-adhesive resin cement



BeautiCem SA

is a self-etch, self-adhesive, dual-cure resin cement which easily, quickly and reliably adheres to enamel and dentine, metals, ceramics and indirect composite resins, without the need for separate bonding or phosphoric acid etching.

BeautiCem SA maximally simplifies adhesive cementation by eliminating these technique-sensitive steps and providing an easy delivery system. The product comes in a dual-barrel syringe with auto-mix tips, consistently mixing the cement in the correct ratio and without any air inclusions.

Moreover, BeautiCem SA releases and recharges fluoride, thanks to SHOFU's proprietary S-PRG filler particles.



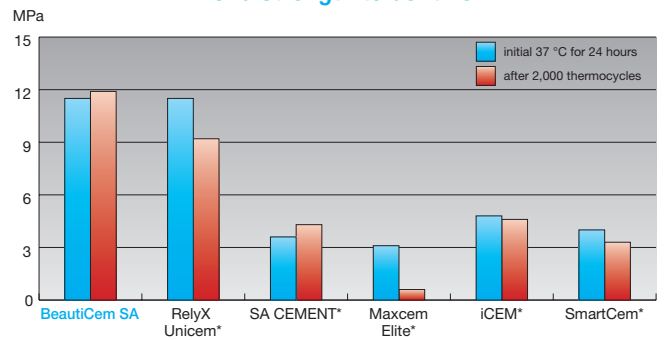
Remarkable strength and durability

The two dual-adhesive monomers of BeautiCem SA guarantee strong adhesion to natural tooth structure and all indirect restorative materials or types of restorations to be adhesively cemented. The innovative catalyst optimises the polymerisation processes taking place in the resin in both chemical self cure and dual cure modes.

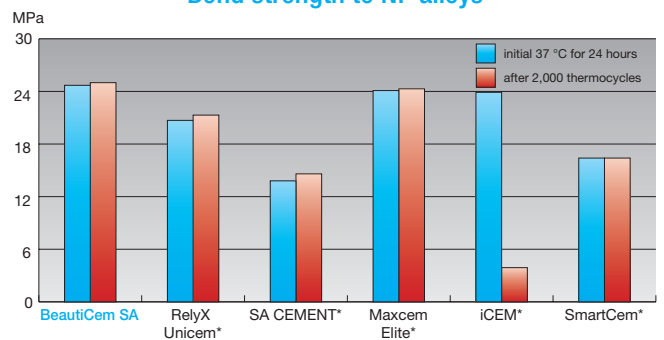
This gives BeautiCem SA superior mechanical properties, ensuring high resistance to occlusal stress for long-lasting restorations.

Besides, excellent radiopacity facilitates diagnoses in future examinations.

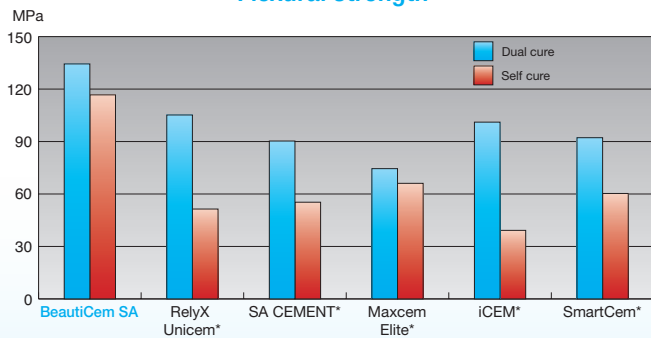
Bond strength to dentine



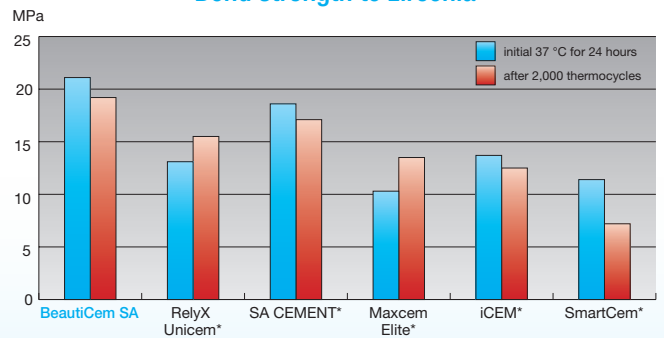
Bond strength to NP alloys



Flexural strength



Bond strength to zirconia



Virtually invisible margins

BeautiCem SA is a resin cement with ideal viscosity, i.e. it is not too thin, enabling controlled delivery and accurate restoration placement.

Thanks to its thixotropic flow behaviour, it forms an even, bubble-free film that is just 11.8 µm thick, making restoration margins virtually undetectable.

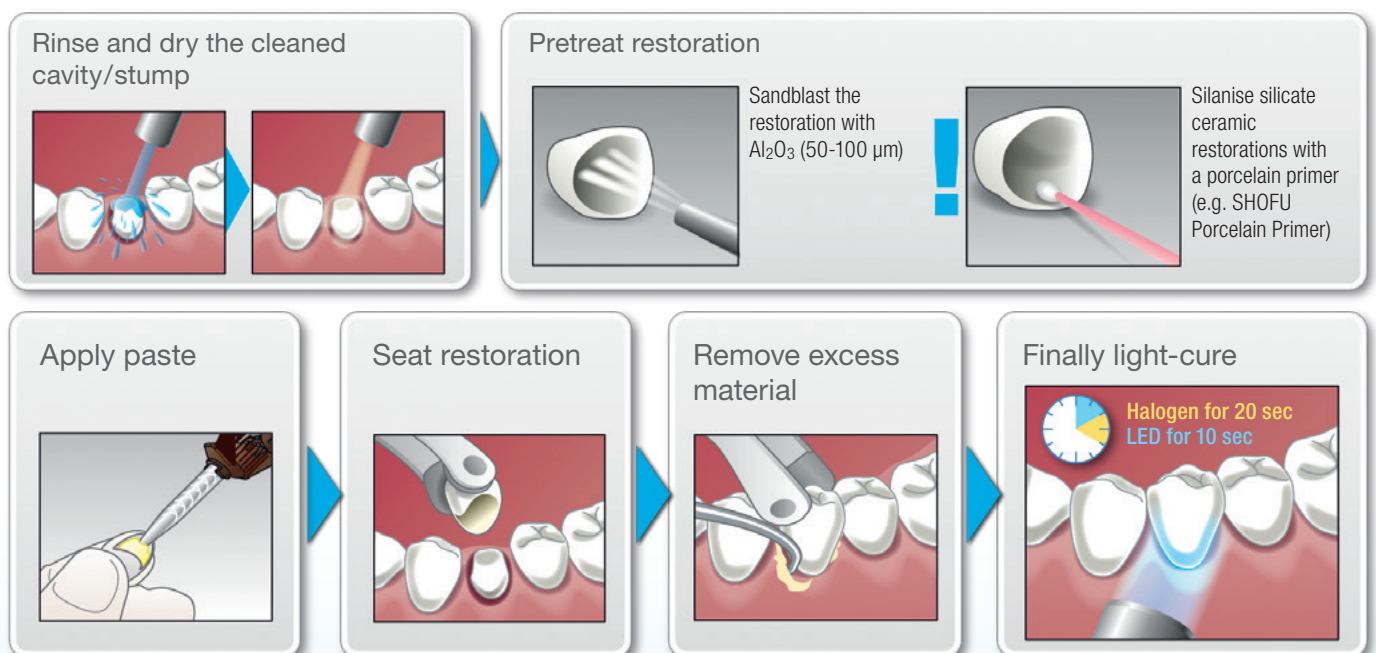
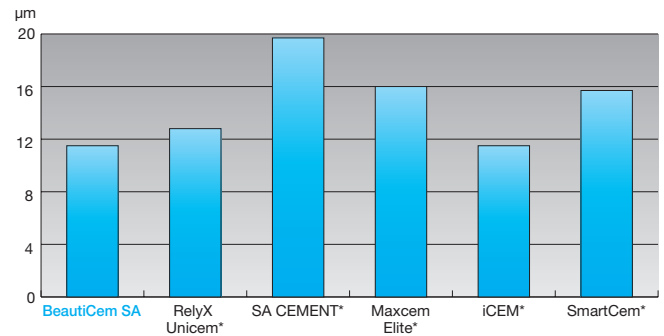
Excess material is easily removed "in one piece" in a rubber-like consistency after very brief light curing or about 3-4 minutes of self curing.

Easy cementation in a few simple steps

The addition of phosphonic and carboxylic acid monomers eliminates the need to separately condition the tooth structure with concentrated phosphoric acid. Separate conditioning of the restoration surfaces to be adhesively cemented is also unnecessary.

Only restorations made of silicate ceramics should be silanised, e.g. with Porcelain Primer.

Film thickness



Sources: Internal data of SHOFU INC., Japan
* Not a registered trademark of SHOFU INC.

Optimal translucency and colour stability

A carefully controlled matrix-filler ratio optimises the refractive index to achieve the highest possible translucency for aesthetically challenging cases. The specially formulated catalyst of BeautiCem SA ensures excellent colour stability and maximum resistance to discolouration.

Advantages at a glance

- Durable bond to a wide range of substrates
- No need for separate phosphoric acid etching, priming or bonding of enamel and dentine
- Outstanding physical properties
- High translucency for aesthetically challenging cases
- Low film thickness (11.8 µm)
- Effective fluoride release for sustained anticariogenic and antibacterial properties

Indications

For the cementation of

1. all-ceramic and indirect composite resin inlays, onlays, crowns and bridges
2. metal-based restorations made of precious, semiprecious and nonprecious alloys, or titanium
3. PFM crowns and bridges (e.g. Vintage PRO, Vintage MP and Vintage Halo)
4. CAD/CAM restorations
5. all-ceramic, indirect composite resin and metal restorations on implant abutments
6. various indirect core build-ups made of metals or composite resins

Order information



BeautiCem SA

Auto-mix syringe, 5 ml,
with 10 mixing tips

Available shades:

Clear – PN 3213

Ivory – PN 3214



SHOFU INC. 11 Kamitakamatsu-cho, Fukuine, Higashiyama-ku, Kyoto 605-0983, Japan
SHOFU DENTAL GmbH An der Pönt 70, 40885 Ratingen, Germany, www.shofu.de

SHOFU is a registered trademark of SHOFU INC. All other trademarks and registered trademarks are the property of their respective holders. SHOFU INC. reserves the right to change specifications without notice.

Official Partner



Minimally Invasive
Cosmetic Dentistry

440202 - 08/2021