

SOLIDEX®

LIGHT-CURED HYBRID COMPOSITE



Esthetic – Efficient – Proven

For more than 15 years, the SOLIDEX composite system has met the expectations of patients, dentists and dental technicians in the veneering of high-quality telescopic or implant-supported restorations and the fabrication of inlays / onlays and veneers.

With a ceramic filler content of over 53 %, this micro-hybrid composite exceeds all requirements state-of-the-art laboratory composites have to fulfill. And it has proved its reliability as a veneering material in years of clinical use.

SOLIDEX sets standards

- Newly designed “Universal Opaque” with excellent masking properties and bond strengths on all dental alloys
- Easy and efficient handling thanks to convenient viscosity and sculptability
- Porcelain-like aesthetics with natural light transmission
- Wide variety of translucent effect composites and fluorescent paste stains (LITE ART)
- Very good polishability and shade match
- Long-term stability of shape and colour
- Numerous commercially available light-curing units suitable for polymerisation*



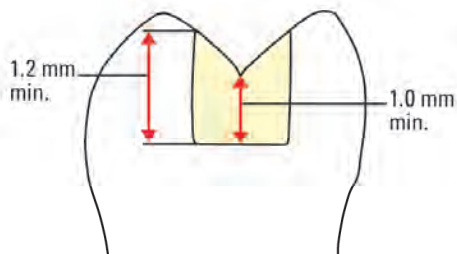
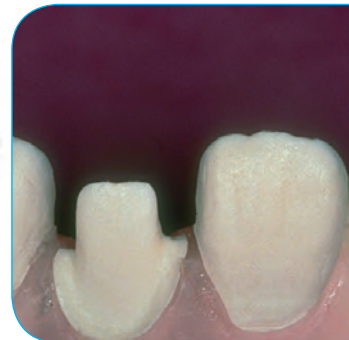
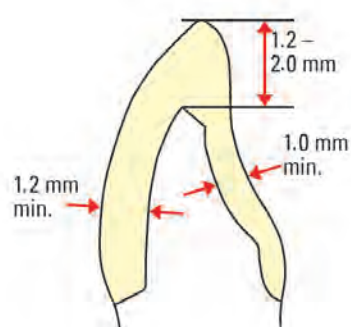
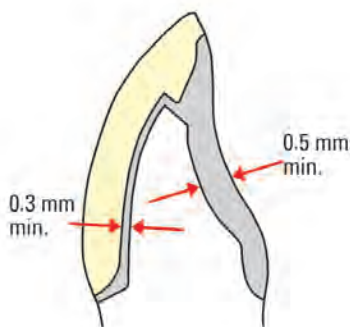
*Units recommended by SHOFU Dental GmbH

One system for a variety of indications

SOLIDEX is a light-curing, ceramic filled, micro-hybrid composite with organic particles in its structure which are impregnated with and enveloped in silanised microfillers. This specific composition is extremely homogeneous and exhibits exceptionally high abrasion resistance, together with elasticity. With these advantages, the SOLIDEX system can be used for a virtually unlimited range of restorations.

- Crowns and bridges
- Telescopic crowns
- Precision attachment work
- Implant-supported restorations
- Long-term temporary restorations
- Occlusal veneering*
- Inlays and onlays
- Laminate veneers
- Modifying conventional acrylic teeth

To make maximum use of these advantages for fabricating aesthetic restorations, the minimum thickness should be taken into account while preparing the tooth.



A precise preparation results in restorations which blend harmoniously with their surroundings and cannot be distinguished from natural teeth.

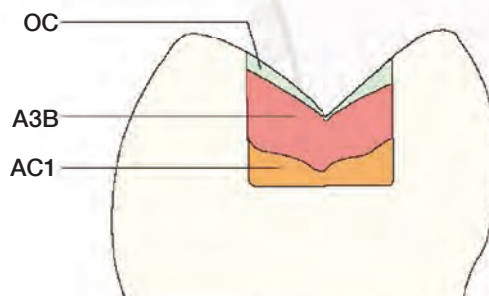
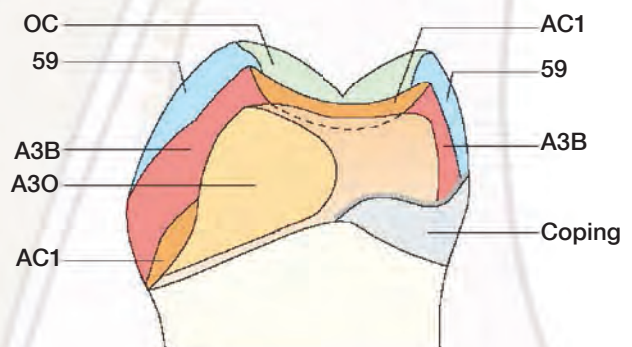
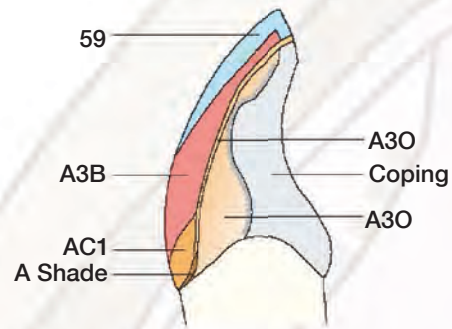
*Including 2nd premolar

Natural appearance with efficient layering technique

The special composition of the SOLIDEX micro-hybrid composite enables the individual materials to transmit light in an identical manner to porcelain, so that a simple layering technique is enough to produce a natural looking restoration.

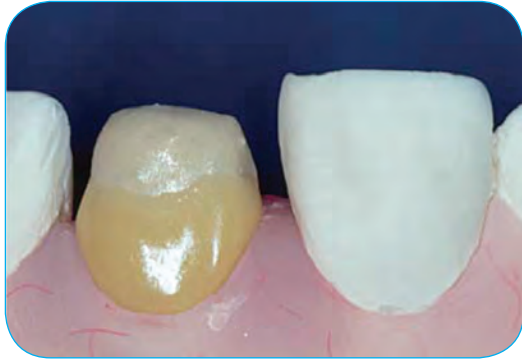
The natural aesthetics are further enhanced by the logically matched opaque, cervical and dentine materials which enable the restorations to blend in, even if the layers differ in thickness.

No matter whether crowns and bridges, implant-supported restorations, inlays, onlays or composite jacket crowns are being fabricated, SOLIDEX materials harmonise to provide systematic working methods and virtually unlimited opportunities for creating aesthetic restorations.



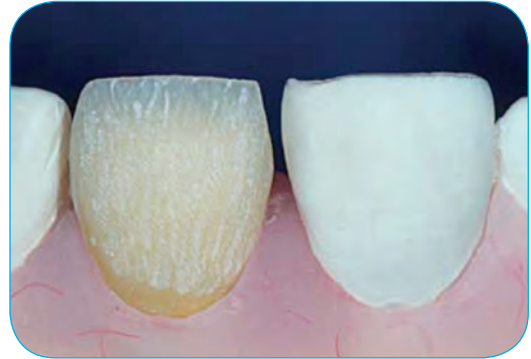
Esthetic composite veneering

step-by-step



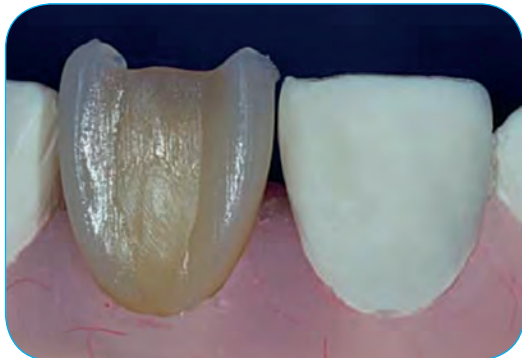
SOLIDEX Cervical

The SOLIDEX cervical materials are highly opaque and reproduce shades excellently, even in thin layers. They are also recommended as a base layer on occlusal surfaces when fabricating inlays / onlays, to achieve a more intensive shade.



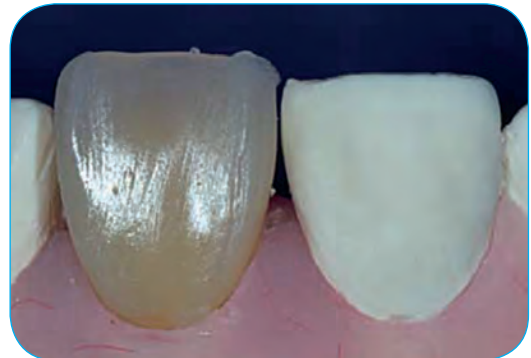
SOLIDEX Body

The SOLIDEX body materials transmit light just like porcelain, so the layer thicknesses of the dentine correspond to those of porcelain. After intermediate light-curing, the shape of the dentine can be adjusted using abrasives. Before adding more materials, however, the dispersion layer has to be restored by applying Cerarezin Bond.



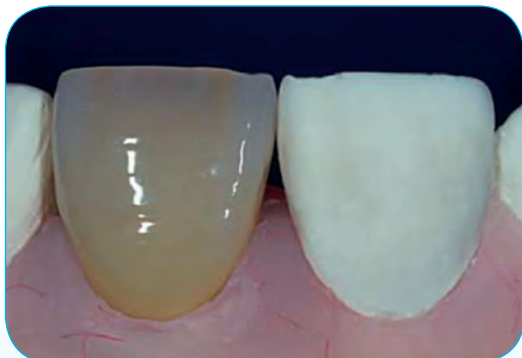
SOLIDEX Translucent

The SOLIDEX system includes three different translucent materials, which are applied as intermediate layers to reproduce zones of differing translucencies in the incisal / interproximal areas.



SOLIDEX Incisial

The SOLIDEX incisal materials, which are opalescent and naturally fluorescent, help to easily reproduce the natural translucency of the enamel structure.



The result – perfect aesthetics!

The finished SOLIDEX restoration is difficult to distinguish from a porcelain restoration.

Highly aesthetic and durable surfaces

SOLIDEX features very good polishability, ensuring homogeneous surfaces and, as a result, outstanding resistance to plaque formation. And a ceramic micro-filler content of 53 % makes the surfaces highly durable.

SOLIDEX Finishing & Polishing Kit

These well-matched rotary finishing and polishing instruments, developed specifically for SOLIDEX, allow you to quickly and easily create high-quality surfaces.



DURA-POLISH

The alumina polishing paste DURA-POLISH creates a surface that is smooth and even on all SOLIDEX restorations. The homogeneous surface can be easily polished to a high lustre in the next step.



DURA-POLISH DIA

This polishing paste is filled with diamond particles to an extremely high level. It was particularly developed to match the particle structure and distribution of the inorganic fillers of the SOLIDEX composite. After the use of DURA-POLISH paste, all anatomical surface details can quickly and easily be polished to a high lustre with DURA-POLISH DIA and a felt wheel.



The instruments of the SOLIDEX Finishing & Polishing Kit prepare the surface perfectly for polishing.



The veneering material looks identical to porcelain after polishing, but offers the advantages of a light-cured composite.



Colours and effects

SOLIDEX BASIC

	A1	A2	A3	A3.5	A4	B1	B2	B3	B4	C1	C2	C3	C4	D2	D3	D4
Opaque																
Incisal Opaque																
Cervical																
Body																
Incisal																

All SOLIDEX composite shades are matched logically and provide a wide range of custom effect modifiers and stains. No matter whether you are producing a standard build-up or reproducing all the natural characteristics for a specific patient, you always work systematically and accurately.

SOLIDEX EFFECT

Opaque Modifier					
Translucent					
Effect					
Base					

Light transmission in the enamel layer

In addition to standard effect materials, SOLIDEX includes a variety of opalescent materials for the reproduction of translucency and enamel effects, just like ceramic veneering systems. Slightly translucent zones with particular depth, amber-coloured incisal areas or milky, opaque regions in occlusal areas can be created without difficulty.



Individual accents

For internal modifications, the LITE ART system allows you to choose from 15 fluorescent paste stains.

These stains are excellently suitable for reproducing individual anomalies by application to the dentine or for shading cervical areas.

Of course, this staining technique can also be used for the customisation of acrylic teeth.

System components



SOLIDEX Intro Sets

Available in the Vita shades A2 and A3



SOLIDEX 8-Color-Set

SOLIDEX starter set including the Vita shades A1 to A4, B2, B3 and C3



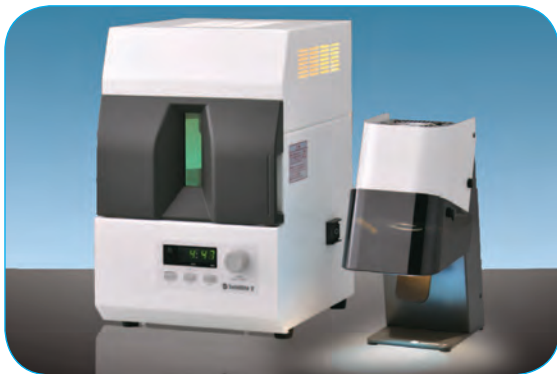
LITE ART Full Set

Fluorescent paste stains for individual accents



M.L. Primer

For reliable bonding to all dental alloys



SOLIDILITE V / SUBLITE V

A powerful team for efficient and gentle light-curing



CRB - Ceraresin Bond

The proven system for bonding to light- and self-curing resins and all ceramic veneering materials



SHOFU INC. 11 Kamitakamatsu-cho, Fukuine, Higashiyama-ku, Kyoto 605-0983, Japan (www.shofu.co.jp)
SHOFU DENTAL ASIA-PACIFIC PTE. LTD. 10 Science Park Road, #03-12 The Alpha, Science Park II, Singapore 117684 (www.shofu.com.sg)
SHOFU DENTAL TRADING (SHANGHAI) CO., LTD. No. 645 Jiye Road, Sheshan Industrial Park, Songjiang, Shanghai 201602, China (www.shofu.com.cn)
SHOFU DENTAL CORPORATION 1225 Stone Drive, San Marcos, CA 92078-4059, USA (www.shofu.com)
SHOFU UK Riverside House, River Lawn Road, Tonbridge, Kent, TN9 1EP, UK (www.shofu.co.uk)
SHOFU DENTAL GmbH Am Brüll 17, 40878 Ratingen, Germany (www.shofu.de)

SHOFU is a registered trademark of SHOFU INC. All other trademarks and registered trademarks are the property of their respective holders. SHOFU INC. reserves the right to change specifications without notice.



www.shofu.de